



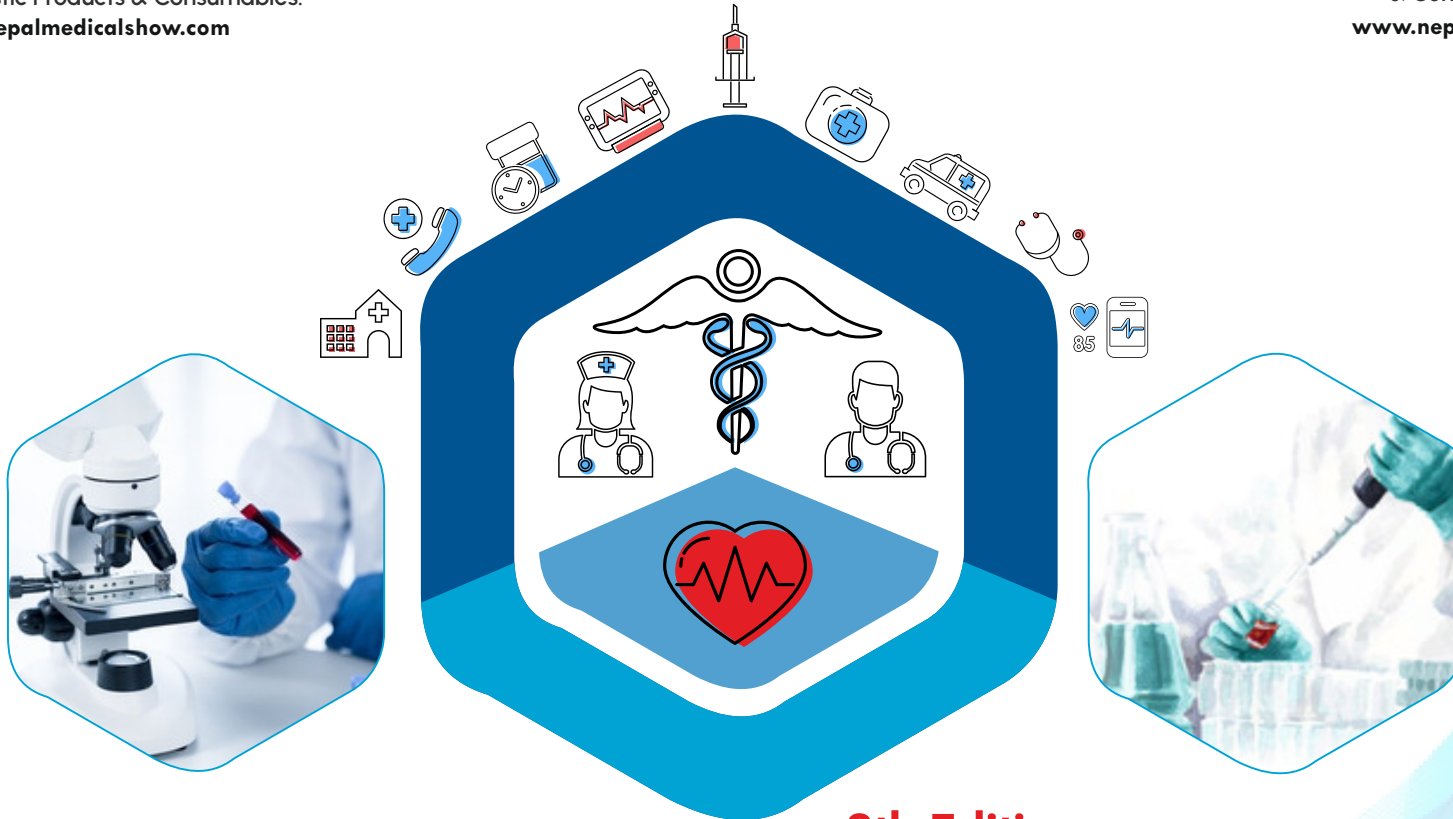
Largest & Only Exposition on Medical Instruments, Surgical, Hospital Equipments, Diagnostic Products & Consumables.

[www.nepalmedicalshow.com](http://www.nepalmedicalshow.com)



Largest B2B Exhibition on Laboratory, Scientific, Analytical, Research and Biotechnology Products & Consumables.

[www.nepallab.com](http://www.nepallab.com)



8th Edition

# EXHIBITION

## SPONSORSHIP MANUAL

**27** • **28** FEBRUARY & **1** MARCH 2025

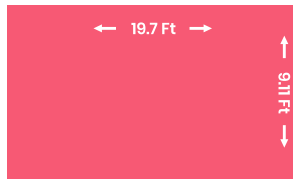
BHRIKUTI MANDAP - KATHMANDU - NEPAL

Dear Exhibitors,

*Please find the below some different branding & promotion opportunities during the show at venue. You can select the best and appropriate sponsorship to promote your brand & products.*

## HOARDING ON SITE

Highlight your brand prominently. Visitors will be able to notice the your brand prowess while entering the Exhibition Venue.



- Frame Size : 10 ft W x 8 ft H
- Text Visibility : 9.5 ft W x 7.5 ft H
- Total No. : 02 only (Minimum Order)
- Inclusion : Printing & Mounting for 3 days

**CHARGES:- INR 12,000/- (Each)**

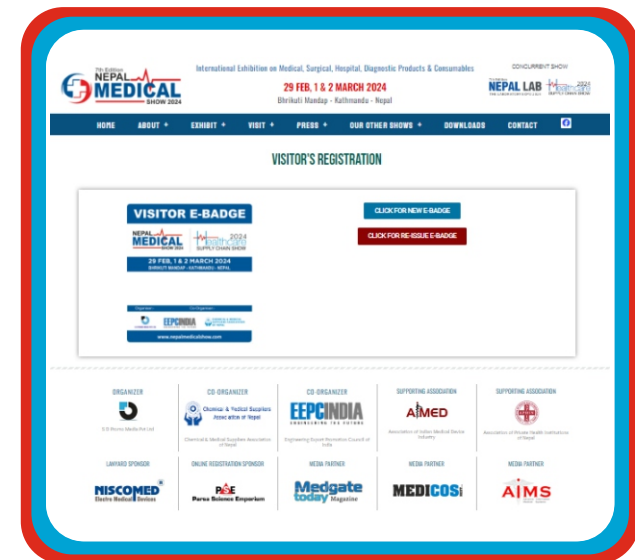


\* The inclusions under Sponsorship are subject to change.

# ONLINE SPONSOR – DIGITAL (VISITOR REGISTRATION PAGE)

- » Company name / logo on digital Visitor registration Page.
- » Full Page Advertisement in Show Catalogue.
- » Company logo with hyperlink in our official website

**CHARGES:- INR 75,000/-**



\* The inclusions under Sponsorship are subject to change.

# LANYARD SPONSOR

- » Company name / logo on 7500 numbers of lanyards
- » Full Page Advertisement in Show Catalogue
- » Company logo with hyperlink in our official website
- » Company logo on all promotional materials (email, ( print brochures, print invitations, exhibitor manual, posters, trade magazines, news papers etc )

**CHARGES:- INR 1,85,000/-**



\* The inclusions under Sponsorship are subject to change.

# VISITOR BADGE SPONSOR FRONT & BACK SIDE

- » Company name / logo on front side of 7500 numbers of Visitor Badges.
- » Product Details with Images on back side of 7500 numbers of Visitor Badges.
- » Full Page Advertisement in Show Catalogue

**CHARGES:- INR 2,30,000/-**



\* The inclusions under Sponsorship are subject to change.

# TRADE PARTNER SPONSOR

- » Company logo on all promotional materials (print invitations, posters, trade magazines, newspapers etc.)
- » Hyperlink Logo on Home Page of [www.banglamedexpo.com](http://www.banglamedexpo.com) with official website.
- » Front Page Advertisement in Show Catalogue
- » Exclusive branding at Exhibition Venue (2 hoarding 8x10 feet)
- » Company Logo on all the branding material during show time at venue
- » An LED 42" will be given to the Exhibitor for their promotions
- » Exclusive Video Promotion for 2 Months in Bangladesh



\* The inclusions under Sponsorship are subject to change.

**CHARGES:- INR 2,25,000/-**

# VISITOR'S INVITATION CARDS SPONSOR

- » We include your company details (12 cm x 5 cm) on 35000 numbers of invitations across Bangladesh.
- » Full Page Advertisement in Show Catalogue
- » Company logo with hyperlink in our official website

**CHARGES: INR 1,00,000/-**



\* The inclusions under Sponsorship are subject to change.

# SELFIE BOOTH SPONSORSHIP

- » Exclusive branding (8X8) including the sponsorship company's logo.
- » Full Page Advertisement in Show Catalogue
- » The Selfie point is movable in all directions. The visitor will take a picture and post it to social media, and tag both the sponsored and the exhibition.
- » Company logo with hyperlink in our official website

**CHARGES: INR 90,000/-**



\* The inclusions under Sponsorship are subject to change.

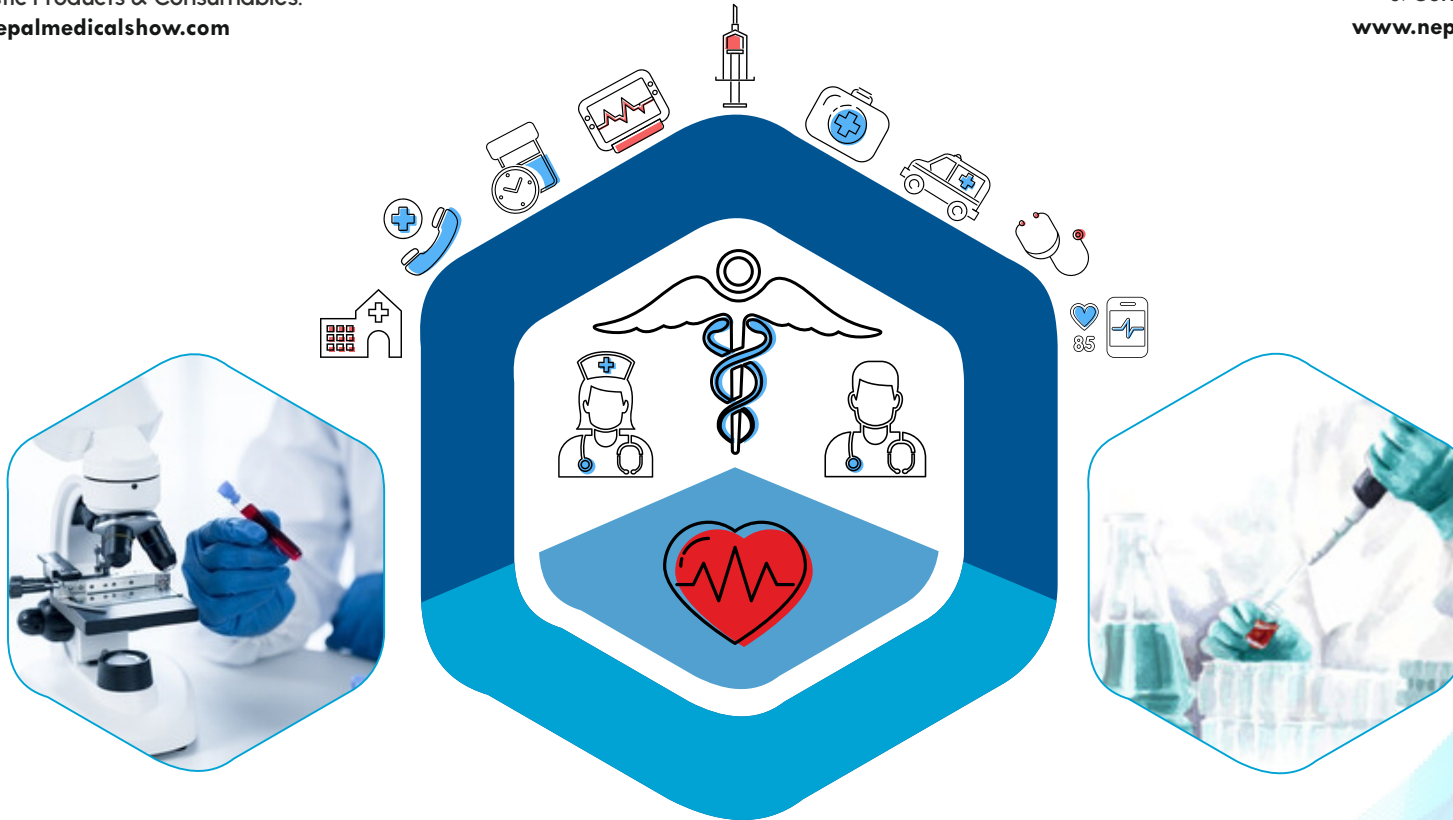


Largest & Only Exposition on Medical Instruments, Surgical, Hospital Equipments, Diagnostic Products & Consumables.

[www.nepalmedicalshow.com](http://www.nepalmedicalshow.com)

Largest B2B Exhibition on Laboratory, Scientific, Analytical, Research and Biotechnology Products & Consumables.

[www.nepallab.com](http://www.nepallab.com)



FOR SPONSORSHIP & BOOKINGS, CONTACT

Anurodh Parashar  
+91 81309 98383  
[anurodh@sdpromomedia.com](mailto:anurodh@sdpromomedia.com)

Debendu Basak  
+91 81309 90665  
[debendu@sdpromomedia.com](mailto:debendu@sdpromomedia.com)

Rohit Bisht  
+91 8178903508  
[rohit@sdpromomedia.com](mailto:rohit@sdpromomedia.com)